



Pr. Olivier FOURMAUX

* Olivier FOURMAUX is a French computer scientist and Full Professor at Sorbonne Université.

He is a member of the LIP6 lab. (CNRS–Sorbonne Université) and is internationally recognized as a leading expert in Internet measurement, network topology discovery, and large-scale network experimentation. His research aims to enhance the architecture and performance of the Internet by analysing data routing and transfer mechanisms, ultimately contributing to greater reliability, security, efficiency, and resilience of global communication networks.

Professor Olivier FOURMAUX visited Okayama University from May 28 to June 9, 2026, to explore opportunities for joint student mobility programmes and collaborative research projects in Informatics with **the Department of Informatics** of the School of Engineering at Okayama University. The visit was organized by Dr. Bernard CHENEVIER, International Research Partnership Developer and Ms. Emi SAITO, International Project Officer, who designed and coordinated a carefully planned and **comprehensive programme** to facilitate academic exchanges, institutional meetings, and the identification of future collaboration opportunities.

The programme at Okayama University started the very first day, meeting with Pr. M. ABE Executive Director for Digital Transformation and Green Transformation, Senior Vice President and Pr. Y. NOGAMI - Greetings and considerations of the various items in the working program.



Then all meetings of the 10 days of exchanges and interactions were held in the recently opened **"KIBINOVE Co-Creation Innovation Lab"** established to accelerate the transfer of innovative research outcomes from Okayama University into high-impact real-world applications, in close collaboration with local government authorities and regional stakeholders.

Globalisation efforts at Oka-Dai* are supported by highly effective initiatives such as the **L-Café**.

* **Oka-Dai**: portemanteau word for **Oka...yama Dai...gaku** - Universities in Japan are frequently called using their "portemanteau word"

Both informal and well-organized, this space managed by Pr. M. FUJIMOTO fosters meaningful linguistic and cultural interactions between Japanese and international students. It is



undoubtedly one of the cornerstones of the university's internationalization strategy. The following days allowed for further discussions with the international affairs division, as well as with several academic leaders, including Professor SUZUKI (Vice President in charge of international relations).



Pr. FOURMAUX was also given various opportunities to explore Okayama University's international master's programmes, particularly the **i-ELST program** that was introduced by Pr. ISHINO. i-ELST combines courses taught in English with research lab training. This programme shares several interesting similarities with the Research Diploma (DU Recherche) of SU and could provide a valuable foundation for the development of future student mobility initiatives. i-ELST and the associated Research Internships are very successful as more than 60 International MASTER students (mainly from French Engineering schools and Universities such as Grenoble-INP or Sorbonne) are now welcome every year for 3 to 8 months periods.



Pr. FOURMAUX was also given various opportunities to explore Okayama University's international master's programmes, particularly the **i-ELST program** that was introduced by Pr. ISHINO. i-ELST combines courses taught in English with research lab training. This programme shares several interesting similarities with the Research Diploma (DU Recherche) of SU and could provide a valuable foundation for the development of future student mobility initiatives. i-ELST and the associated Research Internships are very successful as more than 60 International MASTER students (mainly from French Engineering schools and Universities such as Grenoble-INP or Sorbonne) are now welcome every year for 3 to 8 months periods.



The Tsushima Campus Tour in 2 main locations with Ms. SAITO and Pr. Y. IWABUCHI: a - **Okayama University Library** houses a remarkable collection of historical maps and plans through its renowned Ikedake Bunko (Ikeda Family Collection).

This exceptional archive, inherited from the feudal lords of the Okayama Domain during the Edo period (1603–1867), includes:

** More than 3,000 historical maps and illustrated drawings (Ezu).

** Castle maps, town plans, and topographical maps of former provinces, including Bizen Province.

** Rare administrative and historical documents providing unique insights into the governance, territorial organization, and daily life of the Edo period.



The Ikedake Bunko is an invaluable resource for historians, geographers, and scholars of Japanese history, preserving a unique documentary heritage of early modern Japan.

b - Another particularly interesting aspect of the Campus tour concerned the **students accommodations**. The student residences are well-organized and offer both single rooms and shared apartments. Some accommodations are designed to promote diversity, with Japanese and international students living together, which is a valuable tool for integration. The facilities are comprehensive, including common living areas and appropriate amenities. The immediate surroundings are also favorable, with accessible shops and facilities for cycling. The whole area

offers excellent conditions for student mobility.



The concluding meeting on June-9th was the occasion to draft a tight **WorkPlan for the next 2 to 3 years** - It was in particular planned to consider inviting a SU-Informatics representative every year to keep the pace of the collaboration. Students Mobilities with

or without ERASMUS support, JASSO, in both ways was also further considered - Research projects are now under investigation with a first one on the list in the field of "Internet measurement and associated international platform" where Okayama could be THE Japanese representative.



Beyond the institutional aspects, the stay was distinguished by the quality of the exchanges, the diversity of the people met, several cultural excursions within the frame of L-Cafe:



Fukiya

In the minds of many people from other countries, **red** is a color that stands for Japan. From ancient times, red has been associated with life and sacred things. This is why it has been used on Kutani and Imari pottery. The artisans behind these crafts utilized "**bengara**", a red pigment produced in Bitchu Fukiya,



for this red coloring. The products of traditional Japanese crafts colored with this pigment were highly esteemed in other countries. In time, bengara red came to be perceived as a hue of red unique to Japan, i.e., **Japan Red**. Bengara is made with ore extracted from copper mines. Bengara in the form of a red powder was produced through a series of processes including heating and pulverizing. At Fukiya, this production began in the middle of the Edo period (1603 – 1868). Besides coloring for pottery and lacquerware, bengara was also used as a coating to prevent corrosion on structures and ships. For this reason, **bengara from Fukiya was in widespread distribution nationwide**.

Bichu Matsuyama jo, located in Takahashi, Okayama Prefecture, Bitchu Matsuyama Castle is the highest castle in Japan with an original surviving keep (430m) and the only remaining mountaintop castle tower in the country. Famous as a "Castle in the Sky", it offers spectacular views of a sea of clouds from autumn to spring. It is the

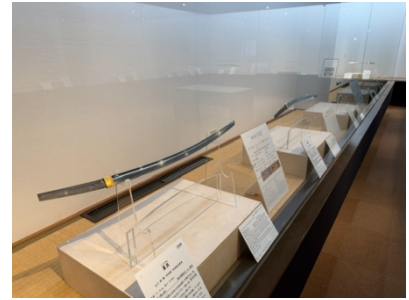


only mountain castle in Japan with a tower remaining, and is one of 12 castles with surviving castle towers from the Edo period.

Bizen Osafune Sword Museum - 15km north west of Okayama city, which has prospered as a production center for Japanese swords since the Kamakura period, this is a rare museum in Japan that exhibits swords, mainly Bizen swords.



The Kamakura period (鎌倉時代, Kamakura jidai; 1185–1333) is a period of Japanese history that marks the governance by the Kamakura shogunate (1192-1336), was officially established in 1192 in Kamakura by the first shōgun Minamoto no Yoritomo. The period is known for the emergence of the **samurai, the warrior caste, and for the establishment of feudalism in Japan.**



Not to mention Sportive Excursions such as "**Shima-nami-kai-do**", the iconic 70-kilometre cycling route linking Onomichi on Honshu to Imabari on Shikoku.

https://biketourjapan.com/shimanamikaido-setouchitour/?gad_source=1&gad_campaignid=2047140645&gclid=EAlalQobChMI5afwnKumIQMVftAWBR3wWgBdEAAYASABEgKU2_D_BwE +



And the warm welcome received throughout the visit.

